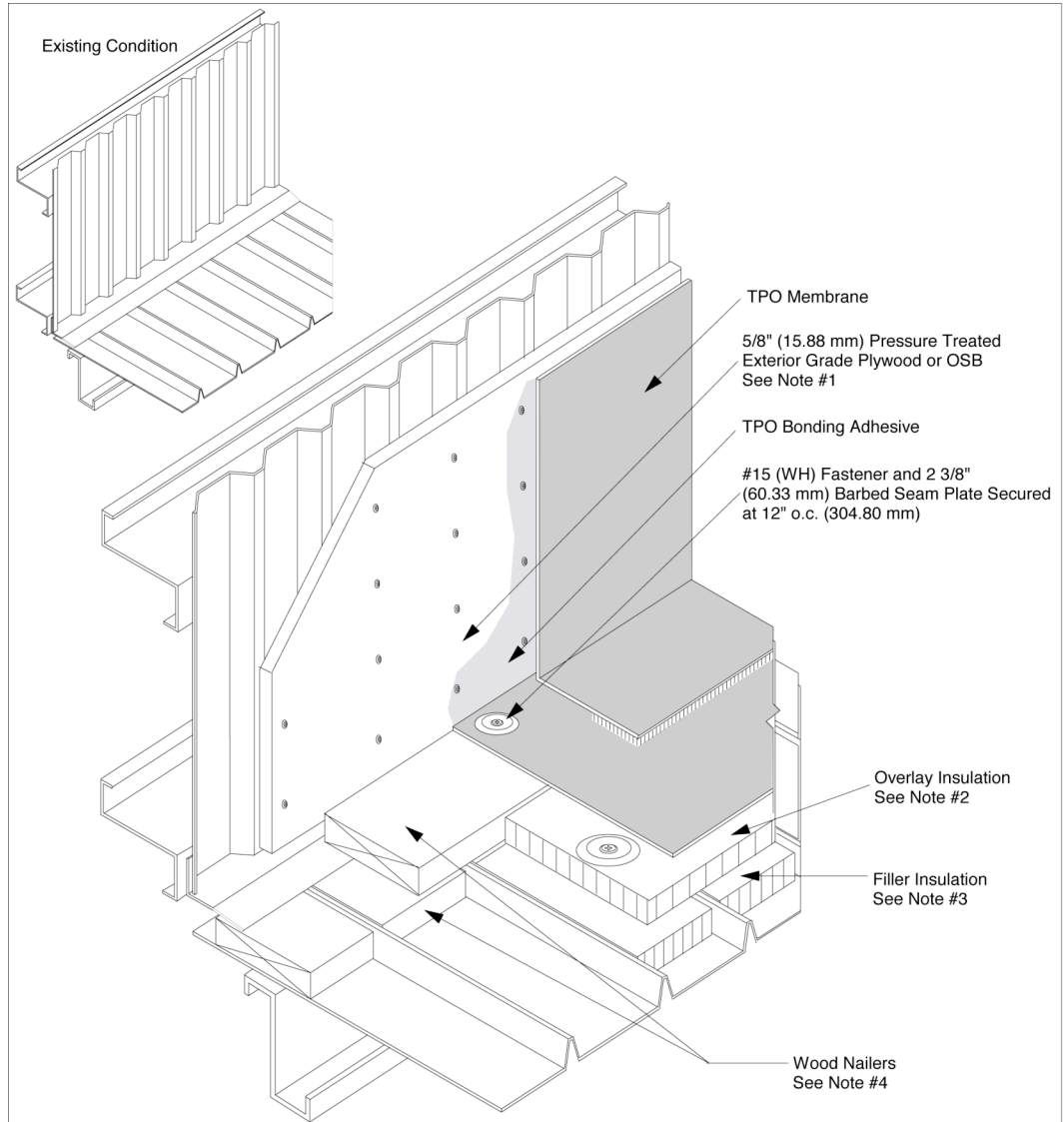




PO Box 6256
 Mobile AL, 36606
 1-800-771-6643

APPLICATION DETAILS

TPO Metal Recover Fully Adhered Systems



1. Secure acceptable vertical substrate material to metal siding, and ensure structural attachment (purlin) along at least two lines of securement.
2. Overlay insulation must comply with minimum requirements called for to span openings in filler insulation and to comply with Fully Adhered System requirements. Secure at the rate of one #15 (WH) Fastener and Insulation Plate per 2 ft² (0.19 m²).
3. Filler insulation should be sized to fit snugly between ribs and of equal thickness to rib height.
4. Wood Nailers must be secured to purlins as required to achieve 200 lb (889.64 N) of pullout resistance per linear foot.



Metal Roof to Vertical Siding Base Flashing

TPO Metal Roof Recover Systems