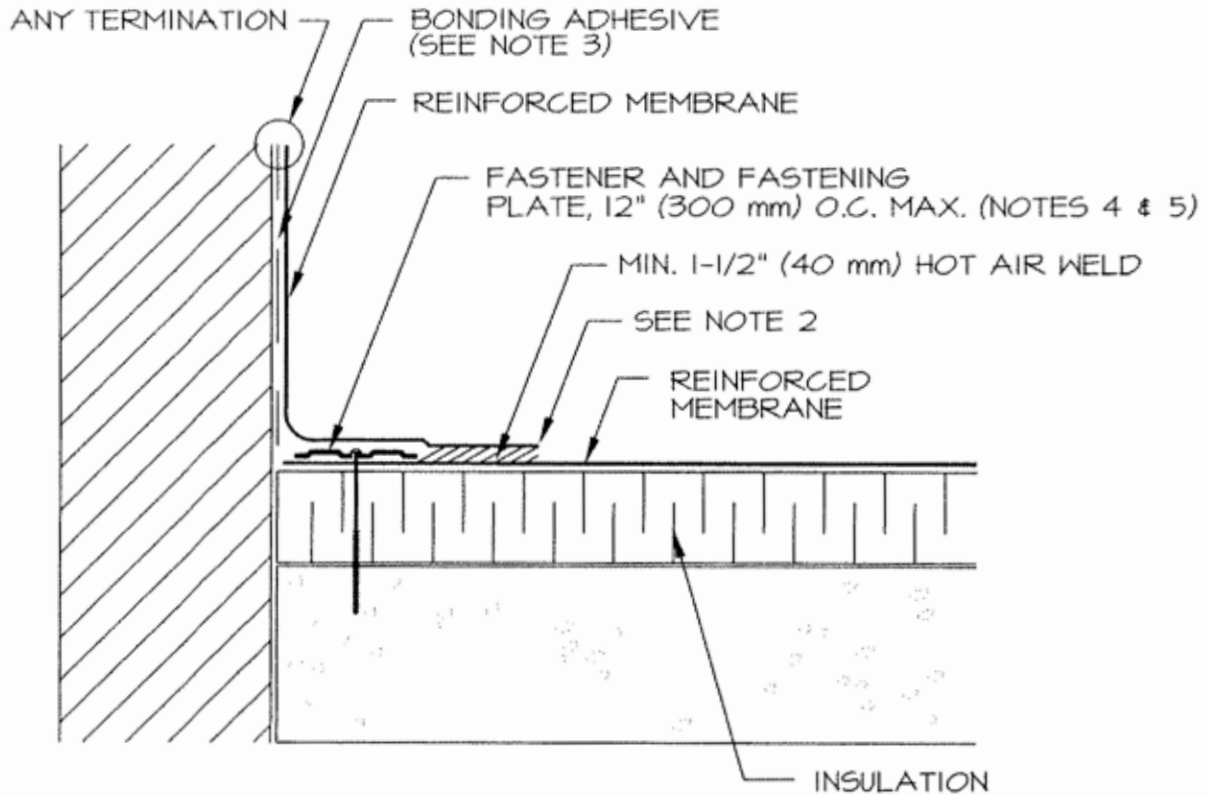


CREASE MEMBRANE AT ANGLE CHANGE TO
LIMIT BRIDGING TO 3/4" (19 mm) MAXIMUM



NOTES:

1. POSITION FASTENING PLATES 1/2" (13 mm) TO 1" (25 mm) FROM EDGE OF DECK MEMBRANE.
2. APPROXIMATELY 1/8" (3 mm) DIAMETER BEAD OF CUT-EDGE SEALANT IS REQUIRED ON CUT EDGES OF REINFORCED MEMBRANE.
3. WHEN COUNTERFLASHING IS USED FOR TERMINATION, BONDING ADHESIVE IS NOT REQUIRED WHEN FLASHING HEIGHT IS 12" (300 mm) OR LESS. WHEN COPING OR A TERMINATION BAR IS USED, ADHESIVE MAY BE ELIMINATED WHEN FLASHING HEIGHT IS 18" (500 mm) OR LESS.
4. HPVX FASTENERS AND HPVX PLATES (OR HPV-XL FASTENERS AND HPV-XL PLATES) ARE REQUIRED OVER STEEL AND WOOD DECKS.
5. FASTENING PLATES CAN BE INSTALLED VERTICALLY.

PARAPET FLASHING



American™
WEATHERSTAR
SINGLE-PLY